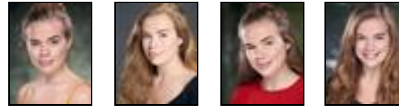




Photo: M.A.D. Photography

ELEANOR CROWE

Graduate - Female



BMA ARTISTS

78 York Street, London W1H 1DP

Phone: 020 3846 8468

E-mail: info@bmaartists.com

WWW: www.bmaartists.com

Training

ROYAL CENTRAL SCHOOL OF SPEECH & DRAMA

Eton Avenue, Swiss Cottage, London NW3 3HY

Phone: 020-7722 8183

Fax: 020-7722 4132

E-mail: enquiries@cssd.ac.uk

WWW: www.cssd.ac.uk

Location:	Greater London, England, United Kingdom Glasgow City, Scotland, United Kingdom	Appearance:	White
Height:	5'6" (167cm)	Nationality:	British, Irish
Playing Age:	16 - 25 years	Other:	Equity
Actual Age:	23 years	Eye Colour:	Hazel
		Hair Colour:	Blond(e)-Dark
		Hair Length:	Long

Credits:

Musical

2019, Musical, Rapunzel's Prince and Ensemble, INTO THE WOODS, Royal Central School of Speech & Drama, Adam Lenson
 2018, Musical, Heather, AMERICAN IDIOT, Edinburgh University Footlights, Maddie Flint
 2017, Musical, Lee Randolph/Ensemble, SUNDAY IN THE PARK WITH GEORGE, National Youth Music Theatre (NYMT), Hannah Chissick
 2017, Musical, Hope Cladwell, URINETOWN: THE MUSICAL, Edinburgh University Footlights, Maddie Flint
 2016, Musical, Ensemble, GUYS AND DOLLS, Edinburgh University Footlights, Lucy Evans
 2015, Musical, Heidi, [TITLE OF SHOW], Edinburgh University Theatre Company, Charlie Ralph
 2015, Musical, Gianetta, THE GONDOLIERS, Edinburgh University, Savoy Opera Group, Thomas Ware

Workshop

2019, Workshop, Joan Clarke, PARDONED, The Bohemians Theatre Company, Joel Nash
 2019, Workshop, Frieda Kühlschrank, RICKY RIDDLEGANG AND THE RIDDLE GANG, Peracals Productions, Olivia Deane

Stage

2019, Stage, Wiggins, CREAM TEA AND INCEST, Arcola Theatre, Peracals Productions
 2019, Stage, Usherette, THE ANIMALS AND CHILDREN TOOK TO THE STREETS, Lyric Hammersmith, 1927
 2019, Stage, Alma, THE TUNNEL, Royal Central School of Speech & Drama, Maja Milatovic-Ovadia
 2018, Stage, John, MISS JULIE, Royal Central School of Speech & Drama, Emma Gersch
 2017, Stage, Catherine, A VIEW FROM THE BRIDGE, Edinburgh University Theatre Company, Andra Gavin

Further Credits

2015, Opera, Spirit 1, THE MAGIC FLUTE, Edinburgh Studio Opera, Lloyd Llewellyn-Jones

Skills:

Accents & Dialects: Aberdeen, American-New York, American-Standard, Central Scottish, Dublin, Edinburgh, English-Standard, Glasgow*, Heightened RP, RP, Scottish-Standard*, Scottish-West Coast
 (* = native)

Languages: English*, French
 (* = Native/Fluent)

Music & Dance: Choral Singing*, Classical Singing*, Coloratura soprano, Fiddle (Scottish), Folk Singing, Jazz Dancing, Jazz Singing, Laban, Opera, Piano, Scottish Dancing, Sight-Reading*, Soprano*, Top Soprano, Violin*
 (* = highly skilled)

Performance: Actor-Musician, Actor-Singer, Children's Theatre, Musical Theatre, Professional Singer, Sight-Reading (non-musical), Sight-Singing, Singer-Professional, Theatre In Education, Voice Acting

Sports: Horse-riding, Running, Swimming, Tennis, Yoga
 (* = highly skilled)

Vehicle Licences: Car Driving Licence

Other Skills: Barista (experienced), DBS (CRB) clearance, Drama Workshop Leader, First Aider (qualified), Law Graduate, Musical Theatre Workshop Leader, Singing Teacher/Coach, Vocal Workshop Leader, Waiting Staff (experience)

Vocal Range: E₃ to E₆ (belt to E₅)

Training:

Royal Central School of Speech & Drama, MA Music Theatre, 1 year, 2018-2019.

University of Edinburgh, Law (LLB) Honours, 4 years, 2014-2018.

SPOTLIGHT • 7 Leicester Place, London WC2H 7RJ • Tel: 020 7437 7631 • www.spotlight.com

Copyright © 2019 Spotlight. The information in this profile has been provided by or on behalf of the member concerned. Whilst every effort has been made to ensure that the information is correct Spotlight cannot accept responsibility for its accuracy.